



NINGBO VALVE FACTORY

Diaphragm Valve



Since Professional We Can Do Better

COMPANY PROFILE

Ningbo Valve Factory was founded as a valve manufacturer in 1959, Geographically, it is located in Ningbo, a seaport at the Delta area of Yangtze River, East China Sea. It takes us around 15 minutes by flight or 3 hours by bus from Shanghai to Ningbo. Company now covers an area over 30, 000 square meters and there are around 250 people at work.

Valve Production and Design

For decades we have been exploring our own valve engineering and learning other new techniques and designs in use we discovered all over the world, so far, we have succeeded a lot, some valves manufactured in our company have already equaled even exceeded the technical standard in western industrialized countries. To make sure product quality and delivery, we give tight control to the whole valve production from material selection, primary processing such as forging and casting, heat treatment, forming and so forth to final finishing processes.

How are we working with overseas customers?

We are committed to supply outstanding and professional services directly to intended customers all around the world, to delight our customers through our promise to continuous improvement in the design, engineering, and manufacture of products that set the standard for quality and value, we let partner gain from trade with NVF in the long run.

1. We are producing mechanical valves according to CAD or real sample provided by customers.
2. We design mechanical valves for customer who is able to tell us the specific application of the valves or standard that the valve should follow.
3. Selecting those valves carried in this catalogue or on our web site.

APPLICATIONS

The valve are used in a broad spectrum of market sectors, including refining, chemical processing, power generation, marine, pulp and paper, petroleum production, and gas processing.

Applications include process liquids, process gases, flue gas, cryogenics, steam, condensate, petroleum products, thermal fluid, and water.





设计与制造: GB12239
结构长度: GB12221、JB1688
法兰连接尺寸: GB4216、JB78

Design and manufacture: GB12239
Face to face dimension: GB12221、JB1688
Connection dimension of flange: GB4216、JB78

用途:
本阀专用于控制非腐蚀性或一般腐蚀性介质，
阀体内腔表面无衬里或覆有可供选择的各种橡胶，
适用于不同工作温度和流体管路。
适用温度: $\leq 85^{\circ}\text{C}$ 、 $\leq 100^{\circ}\text{C}$ 、 $\leq 120^{\circ}\text{C}$
(按照衬里和隔膜材料)

Purpose:
It's special for controlling the noncorrosive or the usual
corrosive media. Its body inner surface is unlined or lined
with different rubbers which can be selected to suit with
different working temperatures and fluid pipelines.
Suitable temperature: $\leq 85^{\circ}\text{C}$ 、 $\leq 100^{\circ}\text{C}$ 、 $\leq 120^{\circ}\text{C}$
(According to the materials of
lining and diaphragm)

压力等级:PN(MPa) Pressure rating:PN (MPa)
0.6 1.0 0.6 1.0

测试:
衬里层: 电火花检测
试验与检验按GB/T13927标准
公称压力: PN(MPa)
阀体: $\text{PN} \times 1.5$
密封: $\text{PN} \times 1.1$
Tests:
Lining layer: Electrosark detecting
Test to GB/T13927
Nominal pressure: PN(MPa)
Body: $\text{PN} \times 1.5$
Seal: $\text{PN} \times 1.1$

材料:
阀 体: 铸铁、球墨铸铁、碳钢、不锈钢
阀 盖: 铸铁、球墨铸铁、碳钢、不锈钢
衬 里: 无衬里、橡胶
隔 膜: 橡胶
阀 瓣: 铸铁
阀 杆: 碳钢、不锈钢
手 轮: 铸铁

Materials:
Body Cast iron, spheroidal graphite cast iron,
carbon steel, stainless steel
Bonnet Cast iron, spheroidal graphite cast iron,
carbon steel, stainless steel
Lining Unlined, rubber
Diaphragm Rubber
Disc Cast iron
Stem Carbon steel, stainless steel
Handwheel Cast iron

结构特点:
隔膜阀是一种特殊形式的截断阀:
1.弹性密封的开闭件，确保没有内漏;
2.流线型的流道，使得压力损失小;
3.没有填料函，因此没有外漏;
4.阀体与盖被中间隔膜隔开，使得隔膜上方的
 阀盖，阀杆等零件不受介质侵蚀;
5.隔膜可更换，维护费用低;
6.衬里材料的多样性，可适用于各种介质，并
 具有良好的耐腐蚀性。

Features:
The diaphragm valve is an especial break valve:
1. The elastic sealed open and close element can avoid
 the inner leak.
2. The clipper-built interval channel can keep the small loss
 of pressure.
3. It hasn't the stuffing box, so it doesn't leak.
4. The body and bonnet are separated by the middle
 diaphragm in order that the bonnet and stem over the
 diaphragm aren't corroded by the medium.
5. The diaphragm is changeable and the expense of main-
 tenance is low.
6. The various lining materials can be suitable for all kinds
 of media and have the good corrosion-resistance.





设计与制造: GB12239
结构长度: GB12221、JB1688
法兰连接尺寸: GB4216、JB78

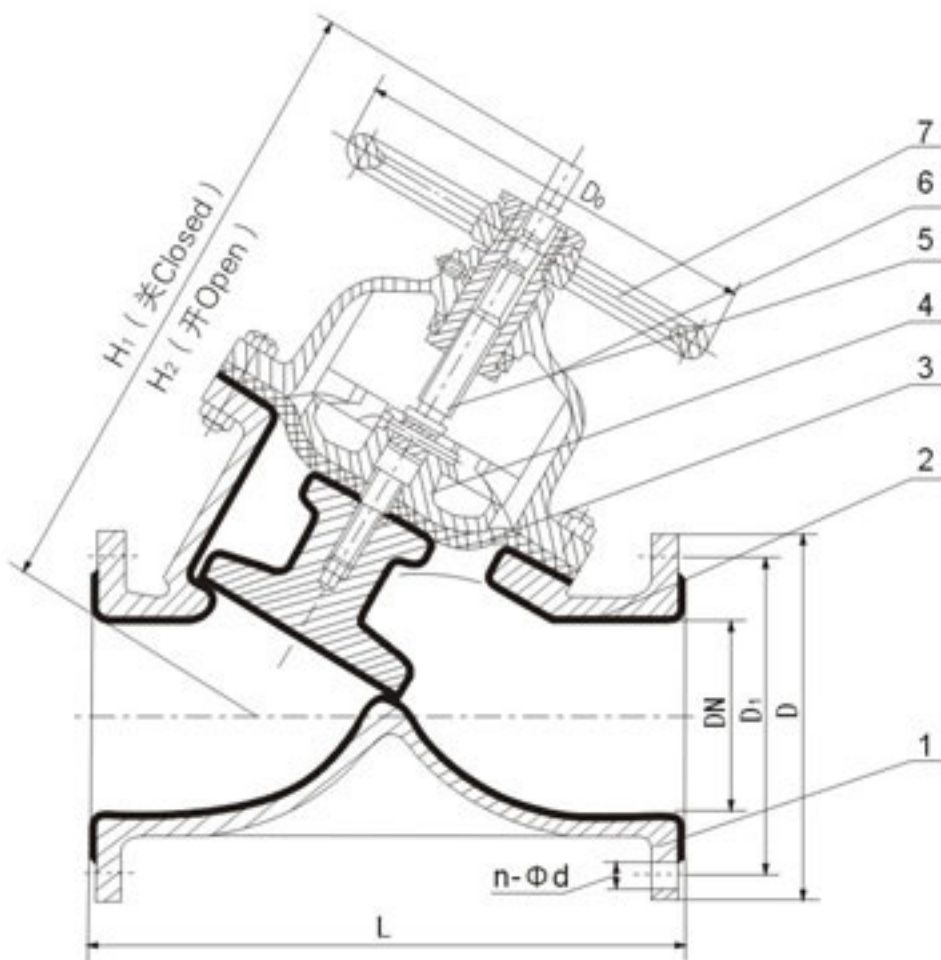
Design and manufacture: GB12239
Face to face dimension: GB12221、JB1688
Connection dimension of flange: GB4216、JB78

部件列表:

1. 阀体
2. 阀体衬里
3. 隔膜
4. 阀瓣
5. 阀杆
6. 阀盖
7. 手轮

Component list :

1. Body
2. Body lining
3. Diaphragm
4. Disc
5. Stem
6. Bonnet
7. Handwheel



公称口径 Nominal size DN	公称压力 Nominal pressure MPa	工作压力 Working pressure MPa	L mm	D mm	D ₁ mm	n-Φd mm	f mm	H ₁ mm	H ₂ mm	D ₀ mm	质量 Weight kg/kilos
25	0.6	0.6	145	115	85	4-14	2	178	190	120	14
32			160	140	100	4-18	2	196	217	140	
40			180	150	110	4-18	3	196	217	140	
50			210	165	125	4-18	3	219	240	200	
65			250	185	145	4-18	3	264	272	200	
80			300	200	160	4-18	3	285	315	280	
100			350	220	180	8-18	3	352	383	320	
125			400	250	210	8-18	3	470	515	320	
150			460	285	240	8-22	3	508	554	400	
200			570	340	295	8-22	4	602	660	500	
250	0.4	0.4	680	395	350	12-22	4	708	786	500	236.5
300			790	445	400	12-22	4				



隔膜阀系列

SERIES OF DIAPHRAGM VALVES

G6B41W(无衬里)、G6B41J(衬胶) 气动隔膜阀(常闭型)

PNEUMATIC OPERATED UNLINED DIAPHRAGM VALVE(NORMALLY CLOSED)
PNEUMATIC OPERATED RUBBER LINED DIAPHRAGM VALVE(NORMALLY CLOSED)

设计与制造: GB12239
结构长度: GB12221、JB1688
法兰连接尺寸: GB4216、JB78

Design and manufacture: GB12239
Face to face dimension: GB12221、JB1688
Connection dimension of flange: GB4216、JB78

用途:

本阀专用于控制非腐蚀性或一般腐蚀性介质，
阀体内腔表面无衬里或覆有可供选择的各种橡胶，
适用于不同工作温度和流体管路。
适用温度: ≤85℃、≤100℃、≤120℃、
≤150℃(按照衬里和隔膜材料)

Purpose:

It's special for controlling the noncorrosive or the usual
corrosive media. Its body inner surface is unlined or lined
with different rubbers which can be selected to suit with
different working temperatures and fluid pipelines.
Suitable temperature: ≤85℃、≤100℃、≤120℃、
≤150℃ (According to the
materials of lining and diaphragm)

压力等级:PN(MPa) Pressure rating:PN (MPa)
0.6 1.0 1.6 0.6 1.0 1.6

测试:

衬里层: 电火花检测
试验与检验按GB/T13927标准
公称压力: PN(MPa)
阀体: PN×1.5
密封: PN×1.1

Tests:

Lining layer: Electrosark detecting
Test to GB/T13927
Nominal pressure: PN(MPa)
Body: PN×1.5
Seal: PN×1.1

材料:

阀 体: 铸铁、球墨铸铁、碳钢、不锈钢
阀 盖: 铸铁、球墨铸铁、碳钢、不锈钢
衬 里: 无衬里、橡胶
隔 膜: 橡胶
阀 瓣: 铸铁、碳钢
气 缸: 球墨铸铁
活 塞: 碳钢
阀 杆: 碳钢
手 轮: 铸铁

Materials:

Body Cast iron, spheroidal graphite cast iron,
carbon steel, stainless steel

Bonnet Cast iron, spheroidal graphite cast iron,
carbon steel, stainless steel

Lining Unlined, rubber
Diaphragm Rubber
Disc Cast iron, carbon steel
Cylinder Spheroidal graphite cast iron
Piston Carbon steel
Stem Carbon steel
Handwheel Cast iron





设计与制造: GB12239
结构长度: GB12221、JB1688
法兰连接尺寸: GB4216、JB78

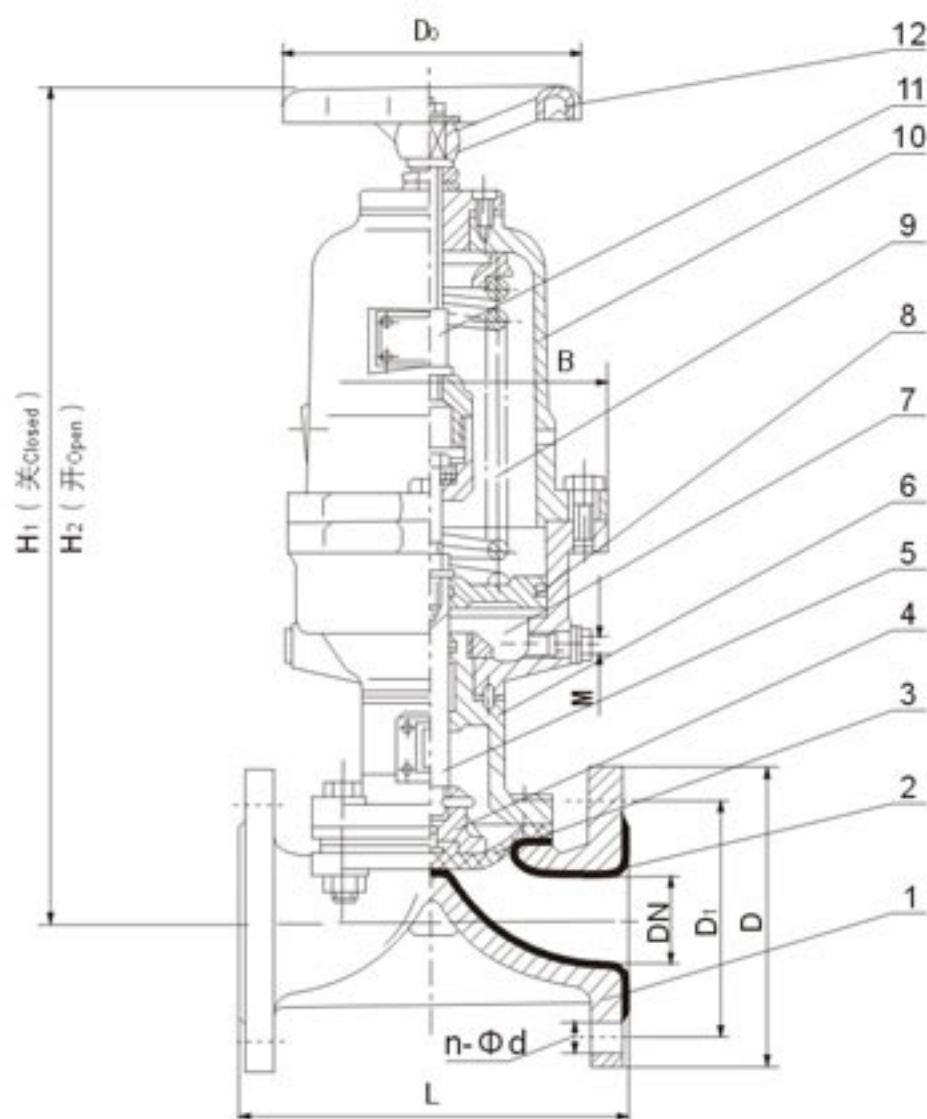
Design and manufacture: GB12239
Face to face dimension: GB12221、JB1688
Connection dimension of flange: GB4216、JB78

部件列表:

- | | | |
|---------|--------|---------|
| 1. 阀体 | 5. 下阀杆 | 9. 弹簧 |
| 2. 阀体衬里 | 6. 阀盖 | 10. 气缸盖 |
| 3. 隔膜 | 7. 气缸 | 11. 上阀杆 |
| 4. 阀瓣 | 8. 活塞 | 12. 手轮 |

Component list :

- | | | |
|----------------|---------------|--------------------|
| 1. Body | 5. Lower Stem | 9. Spring |
| 2. Body lining | 6. Bonnet | 10. Cylinder cover |
| 3. Diaphragm | 7. Cylinder | 11. Upper stem |
| 4. Disc | 8. Piston | 12. Handwheel |



DN mm	公称压力 Nominal pressure MPa	工作压力 Working pressure MPa	L mm	D mm	D ₁ mm	n-Φd mm	f mm	H ₁ mm	H ₂ mm	D ₀ mm	B mm	气源压力 Air pressure MPa	气源接头 Air joint in	耗气量 Air consumption cm ³	质量 Weight kg/kilos
15	0.6	0.6	125	95	65	4-14	2								
20			139	105	75	4-14	2								
25			145	115	85	4-14	2	296	310	120	94	0.4	10×1	2.395×10 ²	8
32			160	140	100	4-18	2	398	416	140	120	0.4	12×1.25	6.082×10 ²	15
40			180	150	110	4-18	3	406	426	140	120	0.4	12×1.25	6.082×10 ²	17.5
50			210	165	125	4-18	3	464	489	160	185	0.4	12×1.25	1.235×10 ³	26
65			250	185	145	4-18	3			160		0.5			32
80			300	200	160	4-18	3	645	685	200	245	0.5	16×1.5	3.725×10 ³	56.5
100			350	220	180	8-18	3	710	760	240	330	0.5	16×1.5	9.458×10 ³	94.5
125			400	250	210	8-18	3	832	900	320	380	0.5	20×1.5	1.409×10 ⁴	170
150	0.4	0.4	460	285	240	8-22	3	933	1013	320	470	0.5	20×1.5	2.868×10 ⁴	229
200			570	340	295	8-22	4	1275	1395	400	470	0.5	20×1.5	4.619×10 ⁴	387
250			680	395	350	12-22	4								



设计与制造: GB12235
结构长度: GB12221(1系列)
法兰连接尺寸: GB4216、JB78

Design and manufacture:GB12235
Face to face dimension:GB12221(Series 1)
Connection dimension of flange :GB4216、JB78

用途:
本阀专用于控制一般腐蚀性介质, 阀体内腔表面覆有可供选择的各种橡胶, 适用于不同工作温度和流体管路,具有强度高、耐腐蚀性能好的特点。
适用温度: $\leq 85^{\circ}\text{C}$ 、 $\leq 100^{\circ}\text{C}$ 、 $\leq 120^{\circ}\text{C}$
(按照衬里材料)

Purpose:
It's special for controlling the usual corrosive media.Its body inner surface is lined with different rubbers which can be selected to suit with different working temperatures and fluid pipelines. It features a high strength and a prominent performance of corrosion resistance. Suitable temperature: $\leq 85^{\circ}\text{C}$ 、 $\leq 100^{\circ}\text{C}$ 、 $\leq 120^{\circ}\text{C}$
(According to the lining material)

压力等级:PN(MPa)	Pressure rating:PN (MPa)
0.6 1.0 1.6	0.6 1.0 1.6

测试:
衬里层: 电火花检测
试验与检验按GB/T13927标准
公称压力: PN(MPa)
阀体: $\text{PN} \times 1.5$
密封: $\text{PN} \times 1.1$
Tests:
Lining layer: Electrosark detecting
Test to GB/T13927
Nominal pressure: PN(MPa)
Body: $\text{PN} \times 1.5$
Seal: $\text{PN} \times 1.1$

材料:
阀 体: 铸铁、碳钢
阀 盖: 铸铁、碳钢
衬 里: 橡胶
阀 瓣: 碳钢完全包覆橡胶
阀 杆: 碳钢部分包覆橡胶
电动装置: 组合件

Materials:
Body Cast iron, carbon steel
Bonnet Cast iron, carbon steel
Lining Rubber, fluorine plastic
Disc Carbon steel fully covered with rubber
Stem Carbon steel partially covered with rubber
Electric actuator Assembly





设计与制造: GB12235
结构长度: GB12221(1系列)
法兰连接尺寸: GB4216、JB78

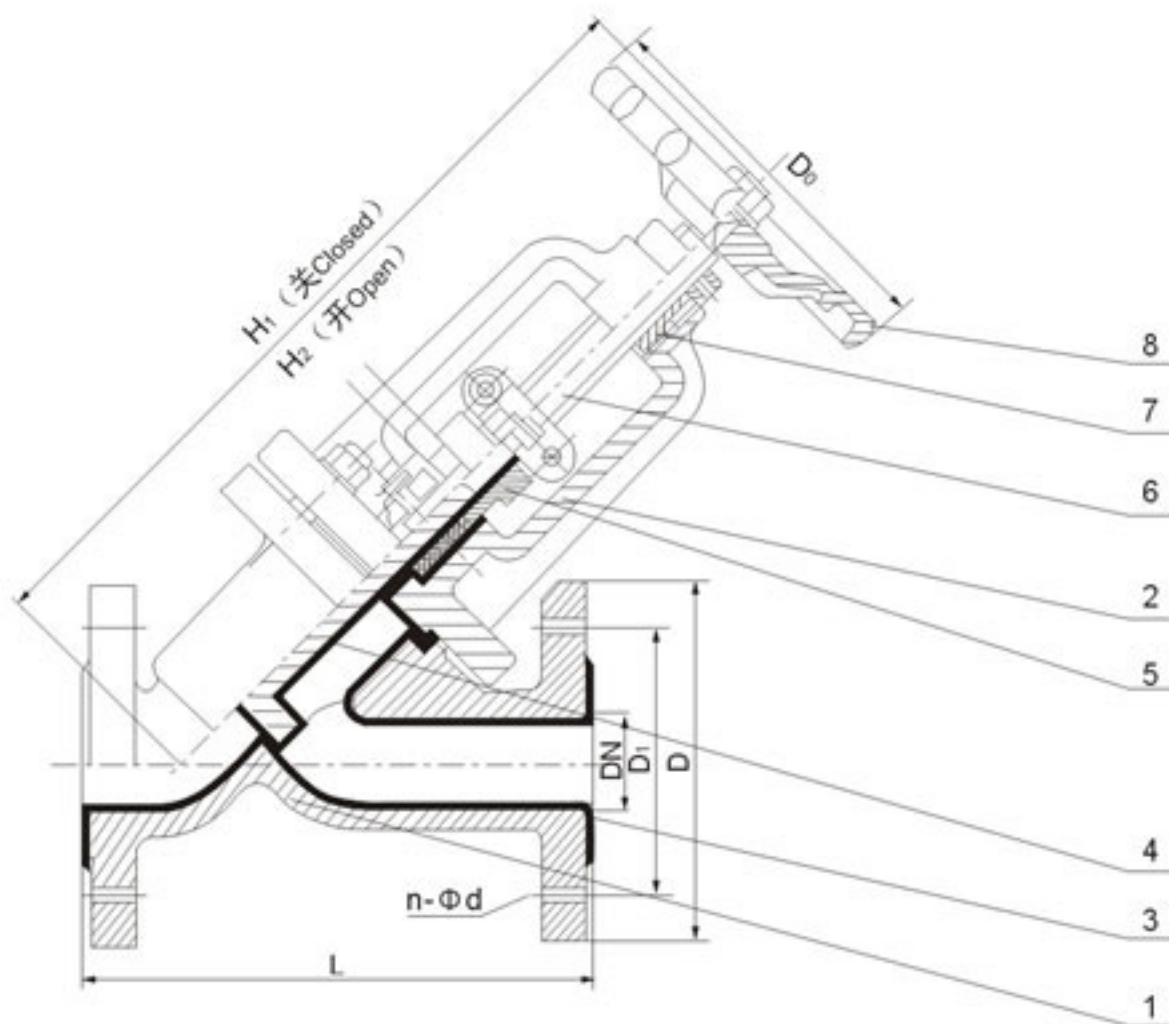
Design and manufacture:GB12235
Face to face dimension:GB12221(Series 1)
Connection dimension of flange :GB4216、JB78

部件列表:

- | | |
|---------|--------|
| 1. 阀体 | 5. 压盖子 |
| 2. 阀盖 | 6. 阀杆 |
| 3. 阀体衬里 | 7. 螺母 |
| 4. 阀瓣 | 8. 手轮 |

Component list :

- | | |
|----------------|--------------|
| 1. Body | 5. Gland |
| 2. Bonnet | 6. Stem |
| 3. Body lining | 7. Nut |
| 4. Disc | 8. Handwheel |



公称通径 Nominal size DN	公称压力 Nominal pressure MPa	工作压力 Working pressure MPa	L mm	D mm	D ₁ mm	n-Φd mm	D ₀ mm	质量 Weight kg/kilos
25	1.0	1.0	160	100	75	4-12	120	4.5
32			200	120	90	4-14	160	13
40			200	130	100	4-14	160	9.5
50			230	140	110	4-14	160	16.5
65			290	160	130	4-14	180	-
80	0.6	0.6	310	190	150	4-18	200	-
100			350	210	170	4-18	200	32
125			400	240	200	8-18	280	45
150			480	265	225	8-18	280	67
200			600	320	280	8-18	400	89
250			730	375	335	12-18		145



设计与制造: GB12239
结构长度: GB12221、JB1688
法兰连接尺寸: GB4216、JB78

Design and manufacture: GB12239
Face to face dimension: GB12221、JB1688
Connection dimension of flange: GB4216、JB78

用途:

本阀专用于控制非腐蚀性或一般腐蚀性介质, 阀体内腔表面无衬里或覆有可供选择的各种橡胶, 适用于不同工作温度和流体管路。
适用温度: $\leq 85^{\circ}\text{C}$ 、 $\leq 100^{\circ}\text{C}$ 、 $\leq 120^{\circ}\text{C}$ 、 $\leq 150^{\circ}\text{C}$ (按照衬里和隔膜材料)

Purpose:

It's special for controlling the noncorrosive or the usual corrosive media. Its body inner surface is unlined or lined with different rubbers which can be selected to suit with different working temperatures and fluid pipelines.
Suitable temperature: $\leq 85^{\circ}\text{C}$ 、 $\leq 100^{\circ}\text{C}$ 、 $\leq 120^{\circ}\text{C}$ 、 $\leq 150^{\circ}\text{C}$ (According to the materials of lining and diaphragm)

压力等级:PN(MPa) Pressure rating:PN (MPa)
0.6 1.0 1.6 0.6 1.0 1.6

测试:

衬里层: 电火花检测
试验与检验按GB/T13927标准
公称压力: PN(MPa)

阀体: $\text{PN} \times 1.5$
密封: $\text{PN} \times 1.1$

Tests:

Lining layer: Electrosark detecting
Test to GB/T13927
Nominal pressure: PN(MPa)
Body: $\text{PN} \times 1.5$
Seal: $\text{PN} \times 1.1$

材料:

阀体: 铸铁、球墨铸铁、碳钢、不锈钢
阀盖: 铸铁、球墨铸铁、碳钢、不锈钢
衬里: 无衬里、橡胶
隔膜: 橡胶
阀瓣: 铸铁
阀杆: 碳钢、不锈钢
手轮: 铸铁

Materials:

Body Cast iron, spheroidal graphite cast iron, carbon steel, stainless steel
Bonnet Cast iron, spheroidal graphite cast iron, carbon steel, stainless steel
Lining Unlined, rubber
Diaphragm Rubber
Disc Cast iron
Stem Carbon steel, stainless steel
Handwheel Cast iron

结构特点:

隔膜阀是一种特殊形式的截断阀:
1.弹性密封的开闭件, 确保没有内漏;
2.流线型的流道, 使得压力损失小;
3.没有填料函, 因此没有外漏;
4.阀体与盖被中间隔膜隔开, 使得隔膜上方的阀盖, 阀杆等零件不受介质侵蚀;
5.隔膜可更换, 维护费用低;
6.衬里材料的多样性, 可适用于各种介质, 并具有良好的耐腐蚀性。

Features:

The diaphragm valve is an especial break valve:
1. The elastic sealed open and close element can avoid the inner leak.
2. The clipper-built interval channel can keep the small loss of pressure.
3. It hasn't the stuffing box, so it doesn't leak.
4. The body and bonnet are separated by the middle diaphragm in order that the bonnet and stem over the diaphragm aren't corroded by the medium.
5. The diaphragm is changeable and the expense of maintenance is low.
6. The various lining materials can be suitable for all kinds of media and have the good corrosion-resistance.





设计与制造: GB12239

结构长度: GB12221、JB1688

法兰连接尺寸: GB4216、JB78

Design and manufacture: GB12239

Face to face dimension: GB12221、JB1688

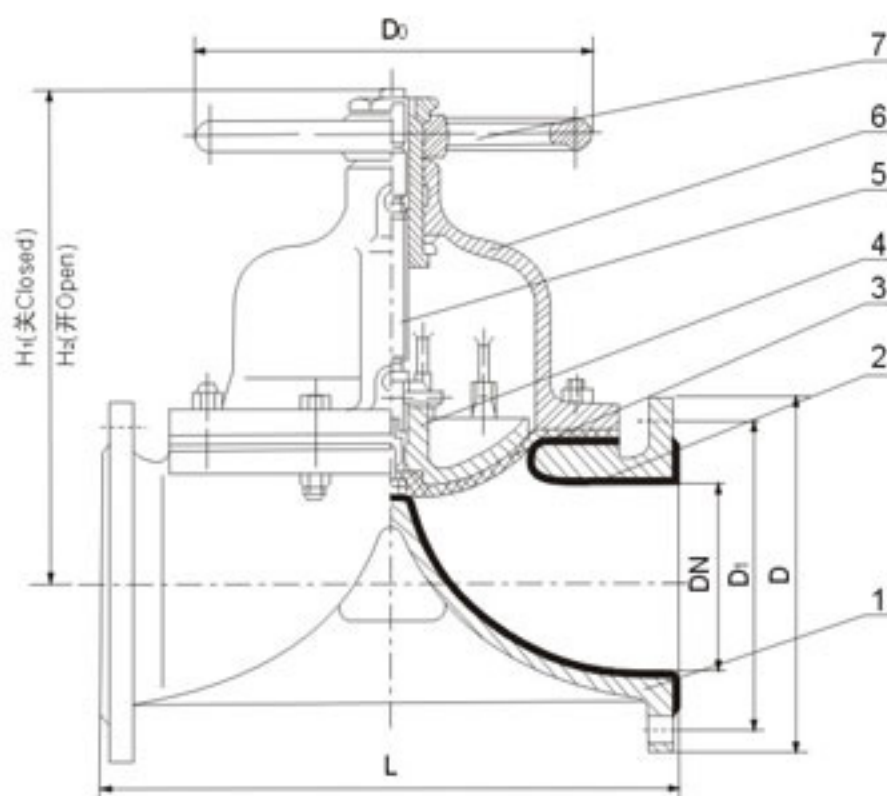
Connection dimension of flange: GB4216、JB78

部件列表:

- | | |
|---------|-------|
| 1. 阀体 | 5. 阀杆 |
| 2. 阀体衬里 | 6. 阀盖 |
| 3. 隔膜 | 7. 手轮 |
| 4. 阀瓣 | |

Component list :

- | | |
|----------------|--------------|
| 1. Body | 5. Stem |
| 2. Body lining | 6. Bonnet |
| 3. Diaphragm | 7. Handwheel |
| 4. Disc | |



公称通径 Nominal size DN	公称压力 Nominal pressure MPa	工作压力 Working pressure MPa	L mm	D mm	D ₁ mm	n-Φd mm	f mm	H ₁ mm	H ₂ mm	D ₀ mm	质量 Weight kg/kilos
15	1.0	1.0	125	95	65	4-14	2	105	116	120	4.5
20			135	105	75	4-14	2	117	128	120	4.5
25			145	115	85	4-14	2	121	135	120	5
32			160	140	100	4-18	2	132	150	120	7
40			180	150	110	4-18	3	156	176	140	9
50			210	165	125	4-18	3	169	195	140	12.5
65			250	185	145	4-18	3	200	236	200	19
80			300	200	160	4-18	3	216	256	200	25.5
100			350	220	180	8-18	3	270	322	280	40
125			400	250	210	8-18	3	315	380	320	62
150	0.6	0.4	460	285	240	8-22	3	378	458	320	80.5
200			570	340	295	8-22	4	518	638	400	146
250			680	395	350	12-22	4	583	720	500	240
300			790	445	400	12-22	4	698	778	500	334
350			900	505	460	16-22	4	723	883	500	371
400		0.25	1000	565	515	16-26	4	868	1078	640	584



隔膜阀系列

SERIES OF DIAPHRAGM VALVES

G49W(无衬里)、G49J(衬胶) 三通隔膜阀

THREE WAY PATTERN UNLINED DIAPHRAGM VALVE

THREE WAY PATTERN RUBBER LINED DIAPHRAGM VALVE

设计与制造: GB12239

结构长度: GB12221、JB1688

法兰连接尺寸: GB4216、JB78

Design and manufacture: GB12239

Face to face dimension: GB12221、JB1688

Connection dimension of flange: GB4216、JB78

用途:

本阀专用于控制非腐蚀性或一般腐蚀性介质, 阀体内腔表面无衬里或覆有可供选择的各种橡胶, 适用于不同工作温度和流体管路。

适用温度: $\leq 85^{\circ}\text{C}$ 、 $\leq 100^{\circ}\text{C}$ 、 $\leq 120^{\circ}\text{C}$ 、 $\leq 150^{\circ}\text{C}$ (按照衬里和隔膜材料)

Purpose:

It's special for controlling the noncorrosive or the usual corrosive media. Its body inner surface is unlined or lined with different rubbers which can be selected to suit with different working temperatures and fluid pipelines.

Suitable temperature: $\leq 85^{\circ}\text{C}$ 、 $\leq 100^{\circ}\text{C}$ 、 $\leq 120^{\circ}\text{C}$ 、 $\leq 150^{\circ}\text{C}$ (According to the materials of lining and diaphragm)

压力等级:PN(MPa)

Pressure rating:PN (MPa)

1.0

1.0

测试:

衬里层: 电火花检测

试验与检验按GB/T13927标准

公称压力: PN(MPa)

阀体: $\text{PN} \times 1.5$

密封: $\text{PN} \times 1.1$

Tests:

Lining layer: Electrosark detecting

Test to GB/T13927

Nominal pressure: PN(MPa)

Body: $\text{PN} \times 1.5$

Seal: $\text{PN} \times 1.1$

材料:

阀体: 铸铁、球墨铸铁、碳钢、不锈钢

阀盖: 铸铁、球墨铸铁、碳钢、不锈钢

衬里: 无衬里、橡胶

隔膜: 橡胶

阀瓣: 铸铁

阀杆: 碳钢、不锈钢

手轮: 铸铁

Materials:

Body Cast iron, spheroidal graphite cast iron, carbon steel, stainless steel

Bonnet Cast iron, spheroidal graphite cast iron, carbon steel, stainless steel

Lining Unlined, rubber

Diaphragm Rubber

Disc Cast iron

Stem Carbon steel, stainless steel

Handwheel Cast iron

结构特点:

隔膜阀是一种特殊形式的截断阀:

- 1.弹性密封的开闭件, 确保没有内漏;
- 2.流线型的流道, 使得压力损失小;
- 3.没有填料函, 因此没有外漏;
- 4.阀体与盖被中间隔膜隔开, 使得隔膜上方的阀盖, 阀杆等零件不受介质侵蚀;
- 5.隔膜可更换, 维护费用低;
- 6.衬里材料的多样性, 可适用于各种介质, 并具有良好的耐腐蚀性。

Features:

The diaphragm valve is an especial break valve:

1. The elastic sealed open and close element can avoid the inner leak.
2. The clipper-built interval channel can keep the small loss of pressure.
3. It hasn't the stuffing box, so it doesn't leak.
4. The body and bonnet are separated by the middle diaphragm in order that the bonnet and stem over the diaphragm aren't corroded by the medium.
5. The diaphragm is changeable and the expense of maintenance is low.
6. The various lining materials can be suitable for all kinds of media and have the good corrosion-resistance.





设计与制造: GB12239
结构长度: GB12221、JB1688
法兰连接尺寸: GB4216、JB78

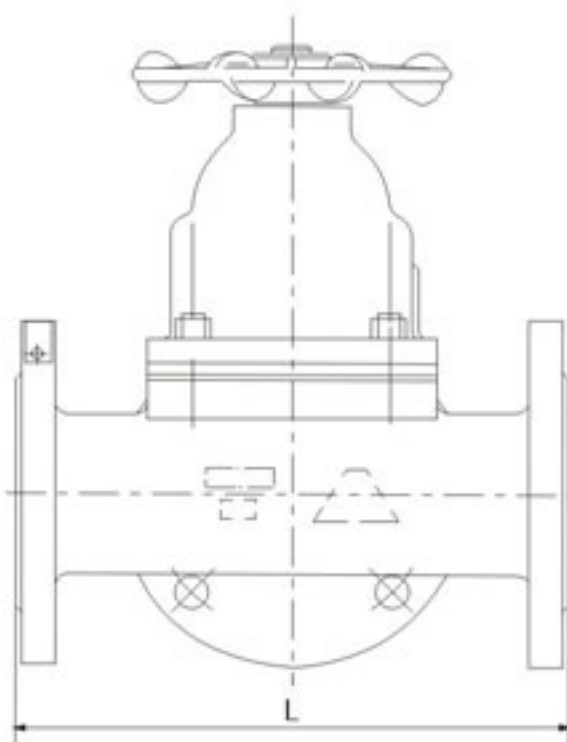
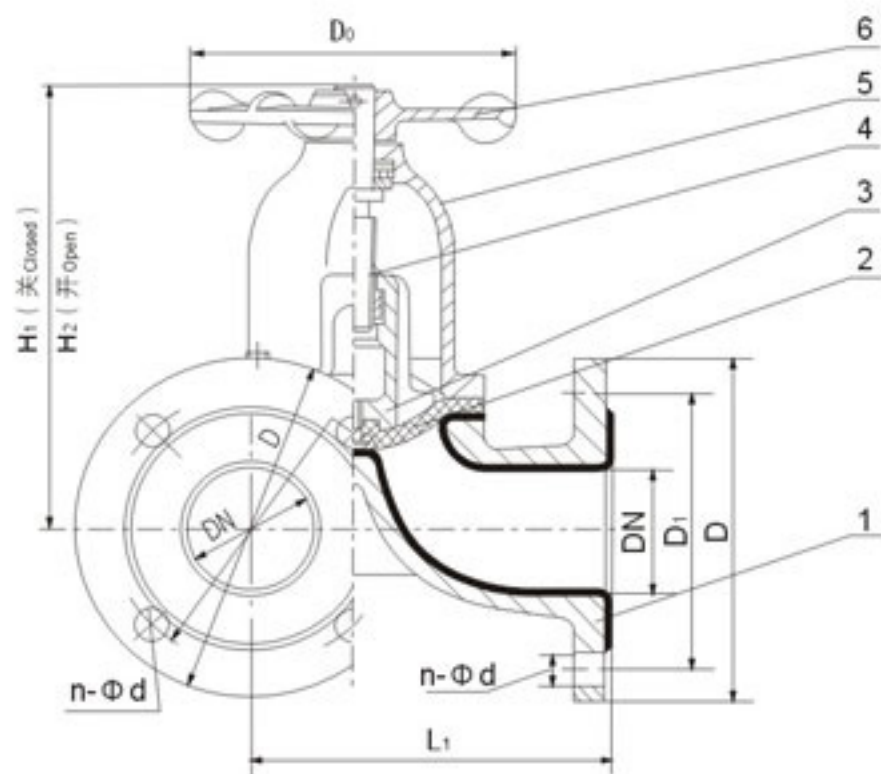
Design and manufacture: GB12239
Face to face dimension: GB12221、JB1688
Connection dimension of flange: GB4216、JB78

部件列表:

1. 阀体
2. 隔膜
3. 阀瓣
4. 阀杆
5. 阀盖
6. 手轮

Component list :

1. Body
2. Diaphragm
3. Disc
4. Stem
5. Bonnet
6. Handwheel



公称通径 Nominal size DN	公称压力 Nominal pressure MPa	工作压力 Working pressure MPa	L mm	L ₁ mm	D mm	D ₁ mm	n-Φd mm	H ₁ mm	H ₂ mm	D ₀ mm	质量 Weight kg/kilos
25	1.0	1.0	160	96	115	85	4-14	108	120	66	5.5
32			180	118	135	100	4-18	138	157	96	8.5
40			200	135	145	110	4-18	147	167	96	12.5
50			230	150	160	125	4-18	167	192	96	17
65			290	182	180	145	4-18	194	229	165	24.5
80			310	210	195	160	4-18	212	252	230	33.5



设计与制造: GB12235
结构长度: GB12221(1系列)
法兰连接尺寸: GB4216

Design and manufacture:GB12235
Face to face dimension:GB12221(Series 1)
Connection dimension of flange :GB4216

用途:
本阀专用于控制一般腐蚀性介质，阀体内腔表面覆有可供选择的各种橡胶，适用于不同工作温度和流体管路,具有强度高、耐腐蚀性能好的特点。
适用温度: ≤85℃、≤100℃、≤120℃
(按照衬里材料)

Purpose:
It's special for controlling the usual corrosive media.Its body inner surface is lined with different rubbers which can be selected to suit with different working temperatures and fluid pipelines. It features a high strength and aprominernt performance of corrosion resistance. Suitable temperature:≤85℃、≤100℃、≤120℃
(According to the lining material)

压力等级:PN(MPa)	Pressure rating:PN (MPa)
0.6 1.0 1.6	0.6 1.0 1.6

测试:
衬里层: 电火花检测
试验与检验按GB/T13927标准
公称压力: PN(MPa)
阀体: PN×1.5
密封: PN×1.1
Tests:
Lining layer: Electrosark detecting
Test to GB/T13927
Nominal pressure: PN(MPa)
Body: PN×1.5
Seal: PN×1.1

材料:
阀 体: 铸铁、碳钢、不锈钢
阀 盖: 铸铁、碳钢、不锈钢
衬 里: 橡胶
阀 瓣: 碳钢、不锈钢, 完全包覆橡胶
阀 杆: 碳钢、不锈钢, 部分包覆橡胶
手 轮: 铸铁、碳钢

Materials:
Body Cast iron, carbon steel, stainless steel
Bonnet Cast iron, carbon steel, stainless steel
Lining Rubber
Disc Carbon steel, stainless steel, fully covered with rubber
Stem Carbon steel, stainless steel, partially covered with rubber
Handwheel Cast iron, carbon steel





设计与制造: GB12235
结构长度: GB12221(1系列)
法兰连接尺寸: GB4216

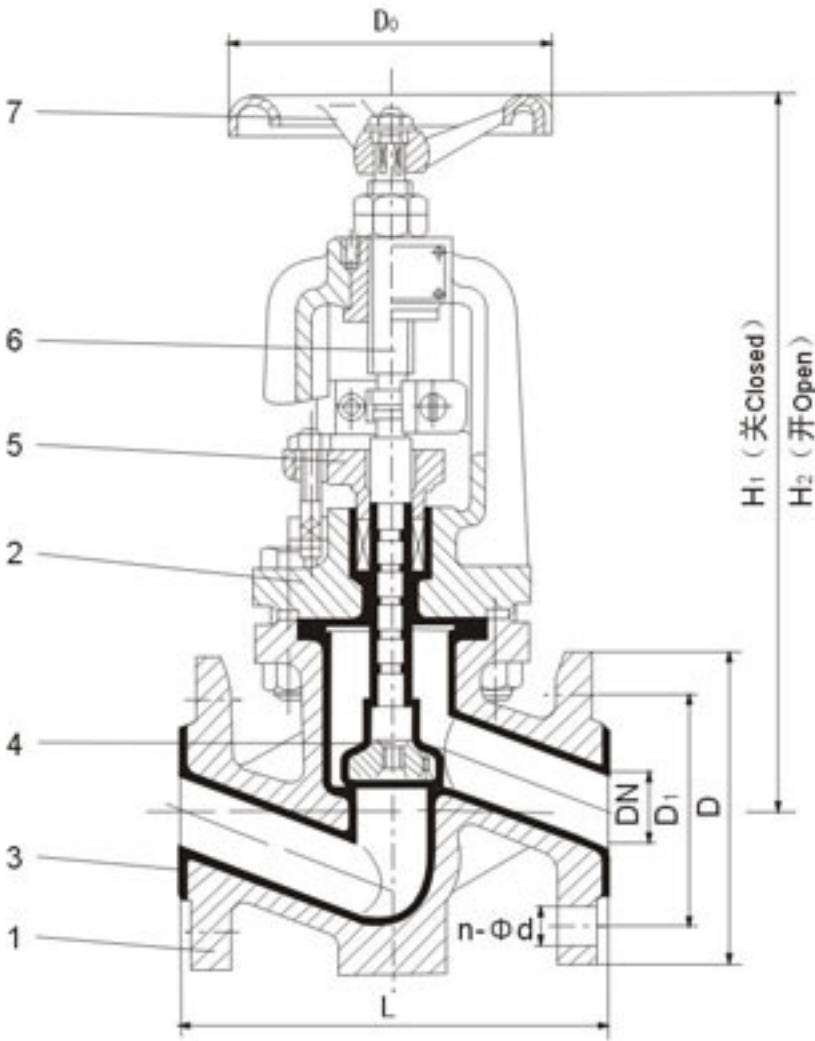
Design and manufacture:GB12235
Face to face dimension:GB12221(Series 1)
Connection dimension of flange :GB4216

部件列表:

- 1. 阀体
- 2. 阀盖
- 3. 阀体衬里
- 4. 阀瓣
- 5. 压盖子
- 6. 阀杆
- 7. 手轮

Component list :

- 1. Body
- 2. Bonnet
- 3. Body lining
- 4. Disc
- 5. Gland
- 6. Stem
- 7. Handwheel



公称通径 Nominal size DN	公称压力 Nominal pressure MPa	工作压力 Working pressure MPa	L mm	D mm	D ₁ mm	n-Φd mm	H ₁ mm	H ₂ mm	D ₀ mm	质量 Weight kg/kilos
15	1.6	1.6	130	95	65	4-14	213	232	100	4
20			150	105	75	4-14	224	246	100	6
25			160	115	85	4-14	240	272	120	8
32			180	140	100	4-18	262	285	120	10.5
40			200	150	110	4-18	283	310	140	16.5
50			230	165	125	4-18	311	345	140	18
65	1.0	1.0	290	185	145	4-18	366	410	160	26
80			310	200	160	6/2-18	388	430	200	36.5
100			350	220	180	6/2-18	463	535	280	58
125			400	250	210	6/2-18	495	575	280	64
150			480	285	240	6/2-22	560	650	320	85
200			600	340	295	6/2-22	615	715	360	155
250	0.6	0.6	622	405	355	10/2-22	790	935	500	243
300			698	460	410	10/2-22	908	1100	500	295